



Procedure for the  
update of the criteria  
in the  
DSF80  
and in the  
DSF80E



# Contents

1	Introduction.....	2
2	Update via USB stick .....	3
2.1	USB stick preparation .....	3
2.2	DSF80/E update.....	3
3	Direct update via computer USB port .....	4

## 1 Introduction

The update of the criteria in the DSF80/E can be carried out in two different ways.

The choice of method is according to the situation.

Following is a brief description of these two methods, indicating also the corresponding hardware and software requirements.

### Method 1: Update via USB stick (Page 3)

The criteria file is loaded in the USB stick.

The USB stick is then used to update the DSF80/E device.

**Advantages:** Once the USB stick has been prepared, it is possible to update one or more DSF80/E at any time.

**Disadvantages:** It is not possible to display the list of the memorized satellites.

**Hardware:** DSF80/E  
12Vdc Power supply  
Computer (Win98, Win2K, WinXP, Vista)  
FAT16 or FAT32 formatted USB stick.

**Software** Criteria file: "*Criteria\_DSf80\_EUROPA*"

### Method 2: Direct update via computer USB port (Page 4)

The criteria file is loaded directly from the computer into the DSF80/E memory.

The DSF80/E is connected to the computer through a USB cable.

**Advantages:** It is possible to display the list of the memorized satellites.

**Disadvantages:** The DSF80/E unit must be connected to a computer.  
The *DSF80E* software for Windows must be installed.

**Hardware:** DSF80/E  
12Vdc Power supply  
Computer (Win98, Win2K, WinXP, Vista)  
A-A Male-Male type USB cable

**Software** Criteria file: "*Criteria\_DSf80\_EUROPA*"  
Software for windows: "*DSF80E*"

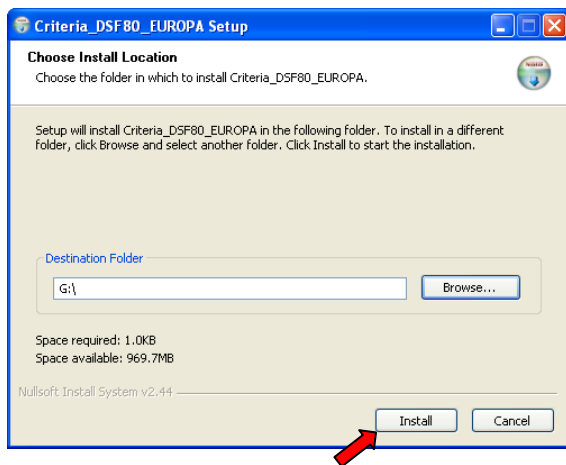
## 2 Update via USB stick

### 2.1 USB stick preparation

Download from the website [www.telecogroup.com](http://www.telecogroup.com) the file “Criteria\_DSf80\_EUROPA.exe”.

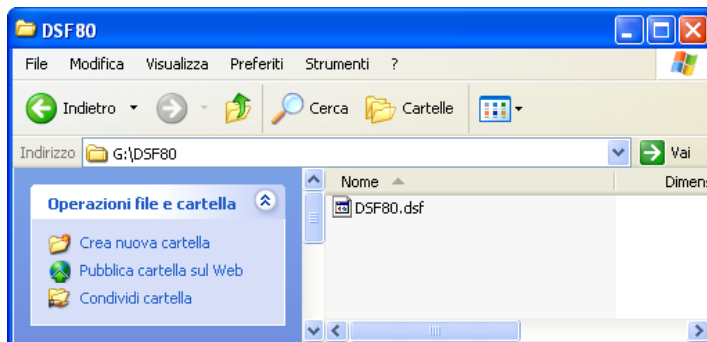
Insert the USB stick in a USB of the computer.

Move the “Criteria\_DSf80\_EUROPA.exe” file into the USB stick and then install it (from inside the USB stick).



Push the “Install” button and once the installation is over close the programme (“Close”).

Make sure the DSF80 folder has been created in the USB stick and verify that the “DSF80.dsf” file has been copied into it.



The USB stick is now ready and it can be used as a tool for updating the criteria in as many DSF80/E units as required.

### 2.2 DSF80/E update

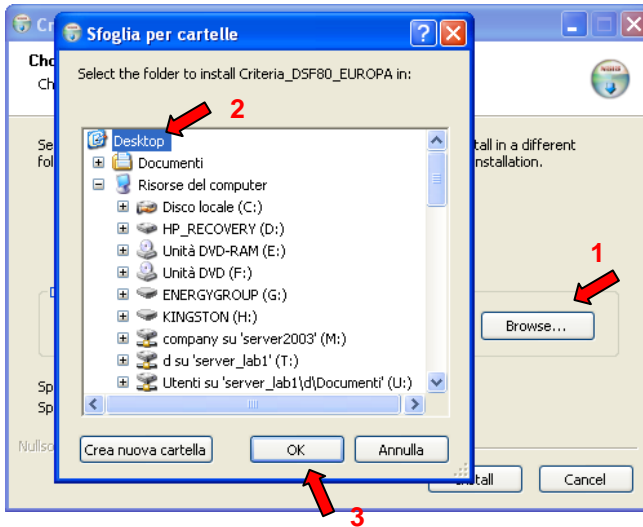
1. Supply 12Vdc power to the DSDF80/E unit
2. Turn the DSF80/E off
3. Insert the USB stick in the DSF80/E USB connector
4. Press the SAT button and turn the DSF80/E on (the SAT button must be kept pressed during the whole update procedure)
5. Hold for approximately 10 seconds: the buzzer will sound and the LED’s in the signal level bar LEVEL will turn on in sequence
6. When the update is completed, the buzzer stops sounding: release the SAT button and turn the DSF80/E off.

The procedure is complete once the LEVEL signal level bar is fully lit. If the LEVEL bar is not fully lit, the procedure must be repeated, until it is done successfully.

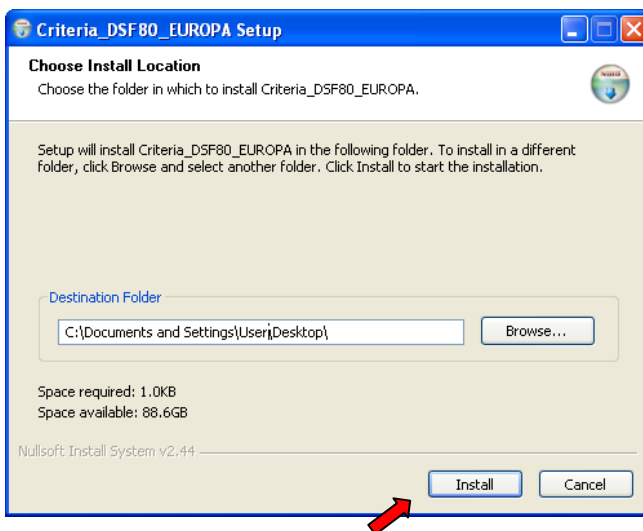
Note: if, once the update is over, only one LED in the signal level bar is on, this means the USB stick cannot be read and in order to be used it must be FAT16 or FAT32 formatted by means of the windows formatting tool. After formatting the stick, reload again the file following “USB stick preparation” procedure.

### 3 Direct update via computer USB port

Download from the website [www.telecogroup.com](http://www.telecogroup.com) the “Criteria\_DSf80\_EUROPA.exe” file. Execute the downloaded file and push on the “Browse” button (1).



Select a computer local path where to unzip the criteria file, for example on the Desktop (1), and push the “OK” button (3).



Push the “Install” button and once the installation is completed close the programme (“Close”).

Download from the website [www.telecogroup.com](http://www.telecogroup.com) the “InstallDSF80.exe” file. Execute the downloaded file and follow the installation instructions.

Launch the DSF80E software from the link created in the desktop.



Supply 12Vdc power to the DSDF80/E unit and connect the DSF80/E USB port to a computer USB port. For this connection it is important to use a Male-Male A-A type USB cable:



Turn the DSF80/E on.

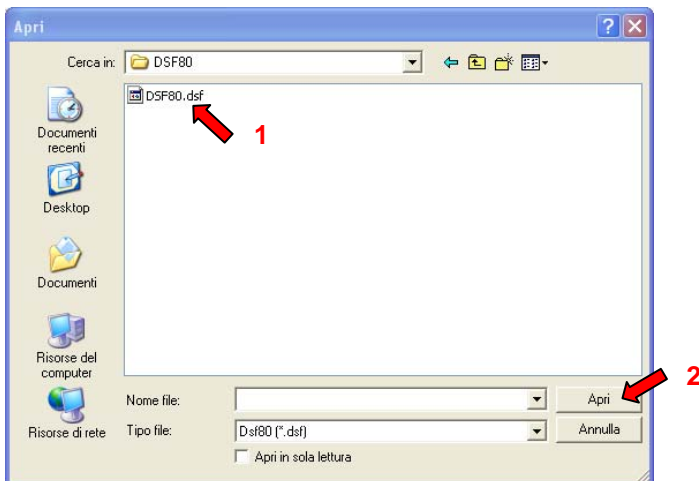
After a few seconds the programme recognizes the device and the message “*Connected*” on a green background appears in the status bar at the bottom on the left:



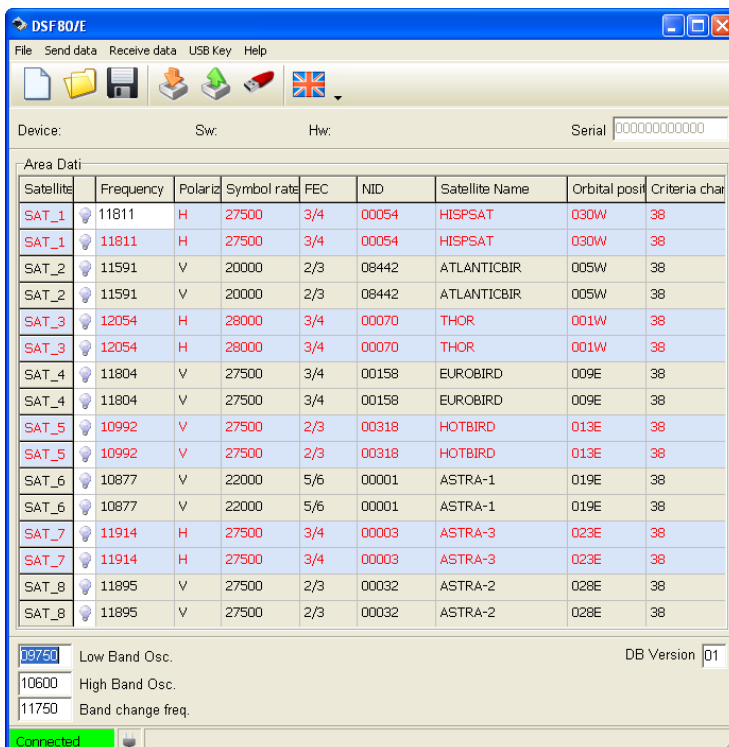
Push the “*Open*” button.



Select the “*DSF80.dsf*” criteria file (1) previously locally unzipped (for ex. Desktop\DSF80)



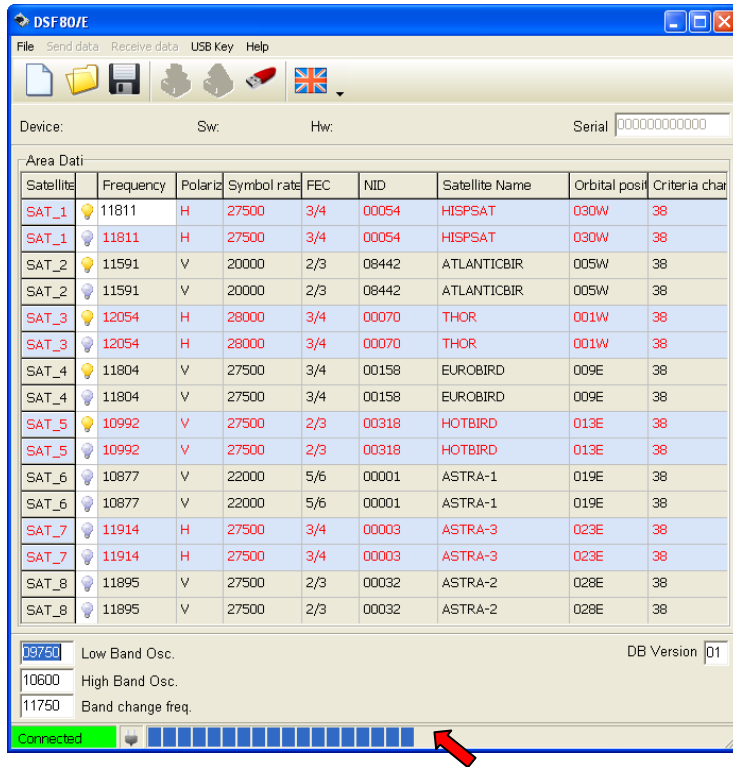
Push the “*Apri*” button (2): the satellite list can now be seen in the grid:



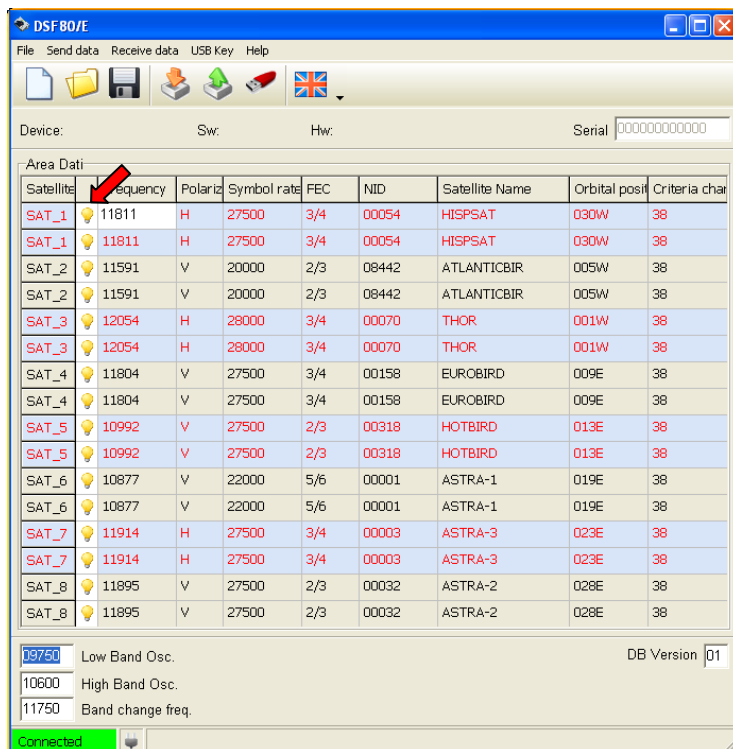
Push the “*Send Data*” button



The files are transferred in the DSF80/E memory. Wait until the advance bar is full.



Once the transfer is over, the advance bar disappears and all the “bulbs” in the list are on.



The unit is updated.





**ITALY**

Via E.Majorana 49

48022 LUGO( RA )

Tel. + 39 0545 25037

Fax.+ 39 0545 32064

Tel. Servizio Assistenza

**899 899 856**

E-mail: [info@telecogroup.com](mailto:info@telecogroup.com)

[www.telecogroup.com](http://www.telecogroup.com)