

# Software upgrade procedure

- \_ **Magic Sat Super Digital CI**
- \_ **TSDR 5000 CI**
- \_ **Flat Sat Digital**

---

# SERIAL LOADER – USER GUIDE

## CONTENTS

<b>1 - INTRODUCTION.....</b>	<b>3</b>
1.1 - Get the software .....	3
1.2 - Serial Link.....	3
1.3 - Serial download server tool.....	3
<b>2 - STEP 1: SERIAL LINK CONFIGURATION .....</b>	<b>5</b>
<b>3 - STEP 2: CONNECTION.....</b>	<b>6</b>
<b>4 - STEP 3: DOWNLOAD MODES .....</b>	<b>7</b>
4.1 - Normal .....	7
4.2 - Forced.....	7
<b>5 - STEP 4: NEW SYSTEM SOFTWARE SEARCH.....</b>	<b>8</b>
<b>6 - STEP 5: SERIAL DOWNLOAD PROCESS.....</b>	<b>10</b>
<b>7 - DOWNLOAD PROCESS RESULTS.....</b>	<b>11</b>
7.1 - Download Completed.....	11
7.2 - Error .....	11

---

# 1 - INTRODUCTION

The aim of this document is to explain the software upgrade procedure for the TSDR5000-CI, for the MagicSat SuperDigital-CI and for the FlatSatDigital (it will be named STB after).

## 1.1 - GET THE SOFTWARE

First of all, connect to [www.telecogroup.com](http://www.telecogroup.com) to get Teleco software: in the area “Support” select “Software update” and then download “SerialLoader” and “microcode”.

### TSDR 5000 CI / MagicSat Super Digital CI

#### Tools

Name	Description	Version and issuing date	File name
Serial Loader User Guide	Software upgrade procedure	Ver. 1.0 dtd 16/03/2007	Serial Loader User Guide_ing.pdf

#### Service lists

Name	Description	Version and issuing date	File name
Service list	Television and radio service archive (list of TV and RADIO programs, both general and favourite lists), to use with the DVBEEditor software	Vers. 1.0 dtd 23.2.2006	Service_100.exe

#### Operating code

Name	Description	Version and issuing date	File name
microcode	TSDR5000 CI & MagicSat Super Digital CI receiver software update	Vers. 2.4.0-9 / 2.4.2 / 2.3 dtd 05/09/2007	Microcode_TSDR-240_242-23.exe

#### Tools

Name	Description	Version and issuing date	File name
SerialLoader	Communication software for operating code loading	Ver. 1.0 dtd 23.2.2006	installserialloader.exe
DVBEEditor	Communication software for service list loading	Ver. 1.1.1 dtd 4.4.2006	InstallDVBEEditor.exe

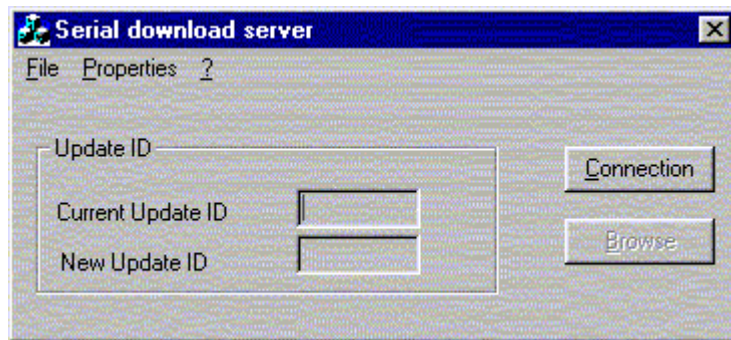
Run “instalSerialLoader.exe” to install the Serial Loader tool and then run “Microcode\_\*.exe” to unpack the STB software: please, write down the folder path selected to save the STB software.

## 1.2 - SERIAL LINK

The STB shall be connected to a PC by means of a RS-232 9 pin Male/Female serial extension cable (wired pin-to-pin).

## 1.3 - SERIAL DOWNLOAD SERVER TOOL

Serial Download Server allows the STB software upgrade by means of a serial link connection established between the PC and STB.



The menu items are:

- **File**
- **Properties**
- **?**

The item **File** has two sub items:

- **Exit:** to close the Serial download server;
- **Reset:** to initialise the different fields of the serial download server.

In the menu item **Properties**, there are two sub items:

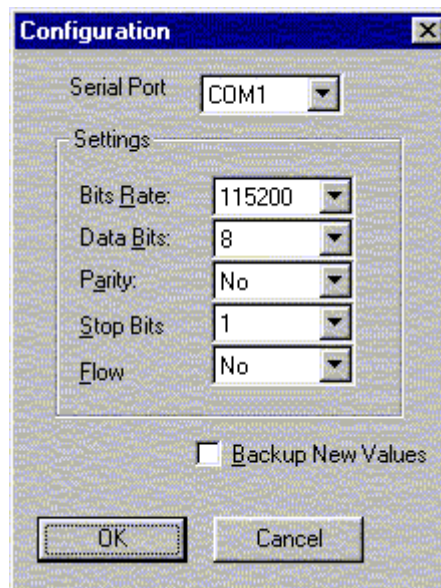
- **Configuration:** to configure the serial link;
- **Forced Update ID:** to download any system software neglecting the current system software update ID.

---

## 2 - STEP 1: SERIAL LINK CONFIGURATION

The first step is the Serial Download Server tool configuration that must agree with the STB serial link configuration.

To configure the serial link, select **Properties** ⇒ **Configuration**: it will display the following window.



Then, select the serial port number in the first list box. The following items are used to configure the chosen serial port.

- Bits Rate: the baud rate (in bits per seconds);
- Data Bits: the send bits account;
- Parity: the error control mode;
- Stop Bits: the bits stop account;
- Flow: the flow control mode.

Use the configuration in figure for a link connection with TSDR5000-CI, MagicSat SuperDigital-CI or FlatSatDigital.

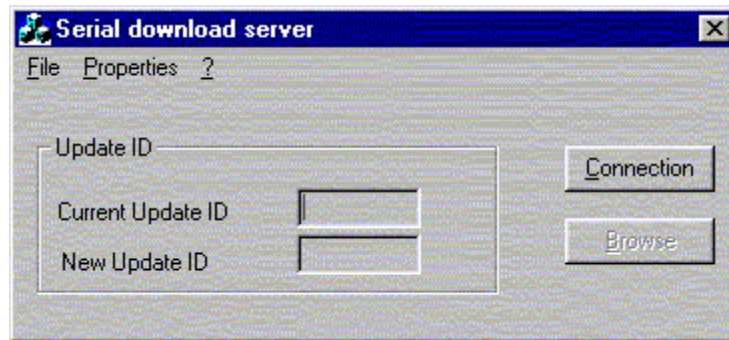
When configuration settings are complete, the Backup New Values case can be tick to save the parameters.

The settings are definitively stored in by pushing the OK button. Otherwise, if the Cancel button is pushed, the parameters are not taken into account even if you have checked the Backup New Values case.

---

### 3 - STEP 2: CONNECTION

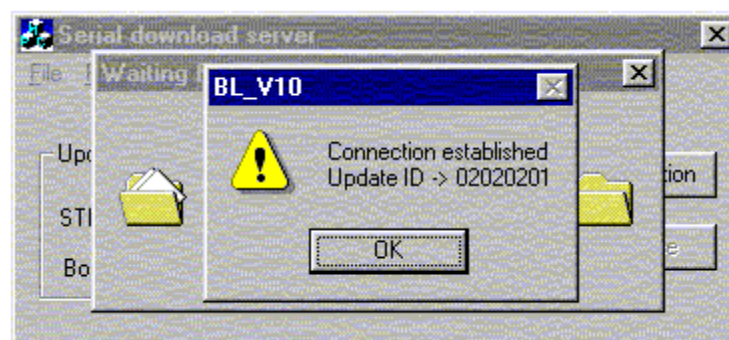
If the serial link is well configured, the serial link can be connected.



From the initial window, the connection button is activated and so the connection can be checked. Check that the STB must be switched off before the connection procedure starts. The serial link establishment starts by pressing the connection button.



Now the STB has to be switched on to acknowledge to the connection step. When the STB and the serial download server are connected together, a window is displayed on the screen as following.

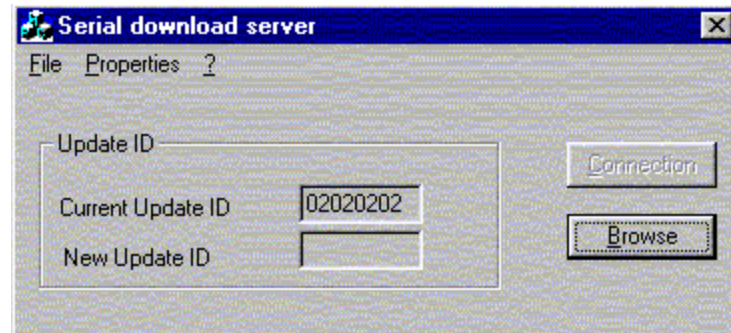


The new window informs the user that the connection is established and gives the current update ID in the STB. This information has to be taken in account to verify if the STB needs an upgrade. Click on the OK button to continue.

---

## 4 - STEP 3: DOWNLOAD MODES

Once that the link connection is established, the serial download server window shows the current STB update ID and it is ready to start to download the new software.



The browse button is activated. The new system software can be loaded by choosing two different ways.

### 4.1 - NORMAL

This is the default mode: the tool will always check that the new Update ID is more recent than the current STB software.

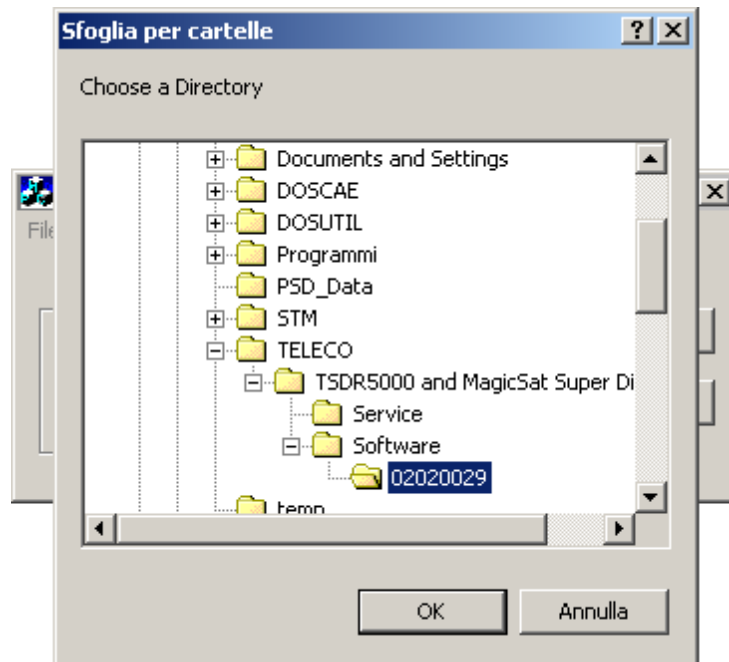
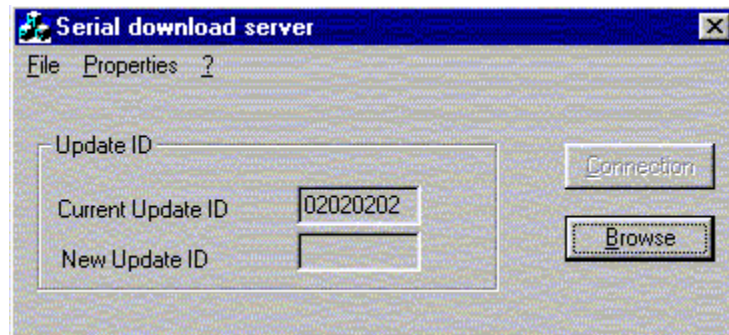
### 4.2 - FORCED

This option upgrades a software version without checking the Update ID: it should be used only for maintenance from a skilled technician. *To activate this option, click on **Properties** ⇒ **Forced Update ID** before clicking on the browse button.*

---

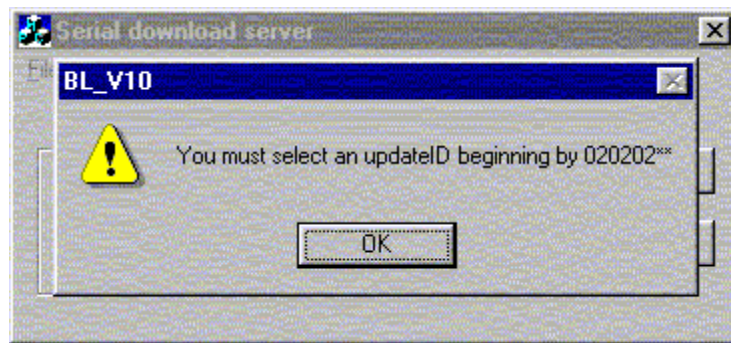
## 5 - STEP 4: NEW SYSTEM SOFTWARE SEARCH

To start to select the new STB software, click on the browse button.



Choose the directory that contains modules of the new system software used by "Microcode\_\*.exe" to save the unpacked STB software.

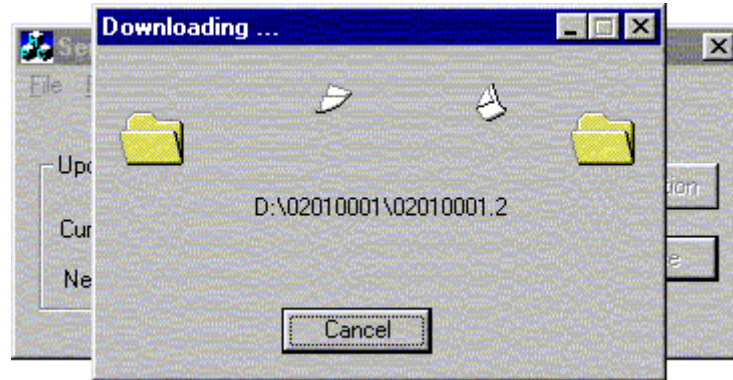
The directory name must be the update ID of the new system software. When the right directory is selected, click on the OK button to accept. If the chosen directory isn't valid or if the selected software is less recent than the current an error message is displayed.



---

## 6 - STEP 5: SERIAL DOWNLOAD PROCESS

When a valid new update ID has been chosen, it is displayed in the field New Update ID and straightaway the download process begins. The displayed window shows the downloading module in progress.



This screen is displayed during all the download process.

---

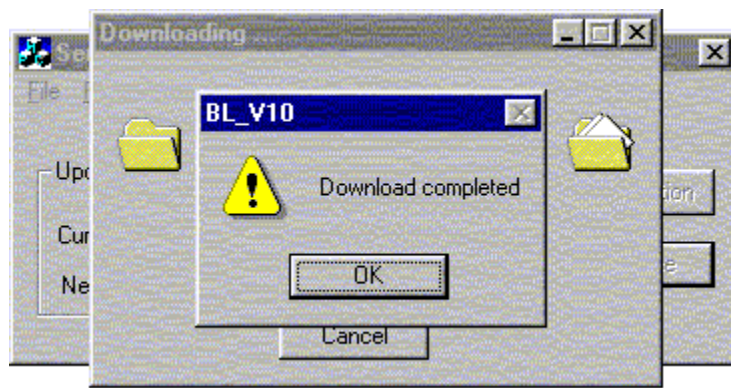
## 7 - DOWNLOAD PROCESS RESULTS

There are two possible download process results:

- Download Completed;
- Error.

### 7.1 - DOWNLOAD COMPLETED

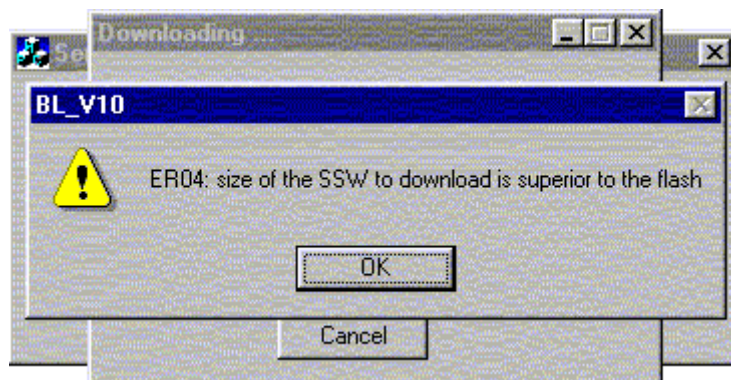
The following window comes up when the process is completed



The user must click on the OK button to close the dialog box: also the downloading window is closed and the tool is ready to manage another download without closing the main window.

### 7.2 - ERROR

If the download process fails, a window will display the STB error message.



# Software upgrade procedure

- \_ Magic Sat Super Digital CI
  - \_ TSDR 5000 CI
  - \_ Flat Sat Digital
- 



## ITALY

Via E.Majorana 49  
48022 LUGO( RA )  
Tel. + 39 0545 25037  
Fax.+ 39 0545 32064  
Tel. Servizio Assistenza

**899 899 856**

E-mail:

[info@telecogroup.com](mailto:info@telecogroup.com)

[www.telecogroup.com](http://www.telecogroup.com)