

Access to the website www.telecogroup.com , go to section “support” and select “Software update”.

Download on your PC the following files:

MagicSat Easy

Searching criteria

Name	Description	Version and issuing date	File name
Criteria	European area searching criteria	Vers. 10 - 06.03.2009	Criteria_MGSTEASY_EUROPA.exe

Tools

Name	Description	Version and issuing date	File name
MagicSat Easy	Communication software for searching criteria loading	Ver. 1.3.2 del 05.09.2008	InstallMagicSatEasy.exe
USB driver	MagicSat Easy interfacing software via the USB port. Decompress the file into a new folder and use it when prompted by the computer.	Ver. 2.00.00 dtd 10.6.2006	InstallTelecoUsbDriver.exe

Install in your PC the program MagicSat Easy and the USB drivers.

Expand the file “Criteria_MGSTEASY_EUROPA.exe” and it will generate a file named “d10 Etichetta Europa Astra3 replaced by Thor”

Connect the Easy control-box to the computer by means of a USB A/B cable.

Give 12 V power supply to the Easy control-box and turn it on by pressing the On/Off button on the control panel.

The first time the operating system sees a new peripheral device, it will ask you to install the corresponding drivers, which you will find at the following path: C:\Teleco\USB driver

Start the program MagicSat Easy which you will find at the following path: C:\programmi\Teleco\MagicSatEasy\MagicSat_Easy.exe.

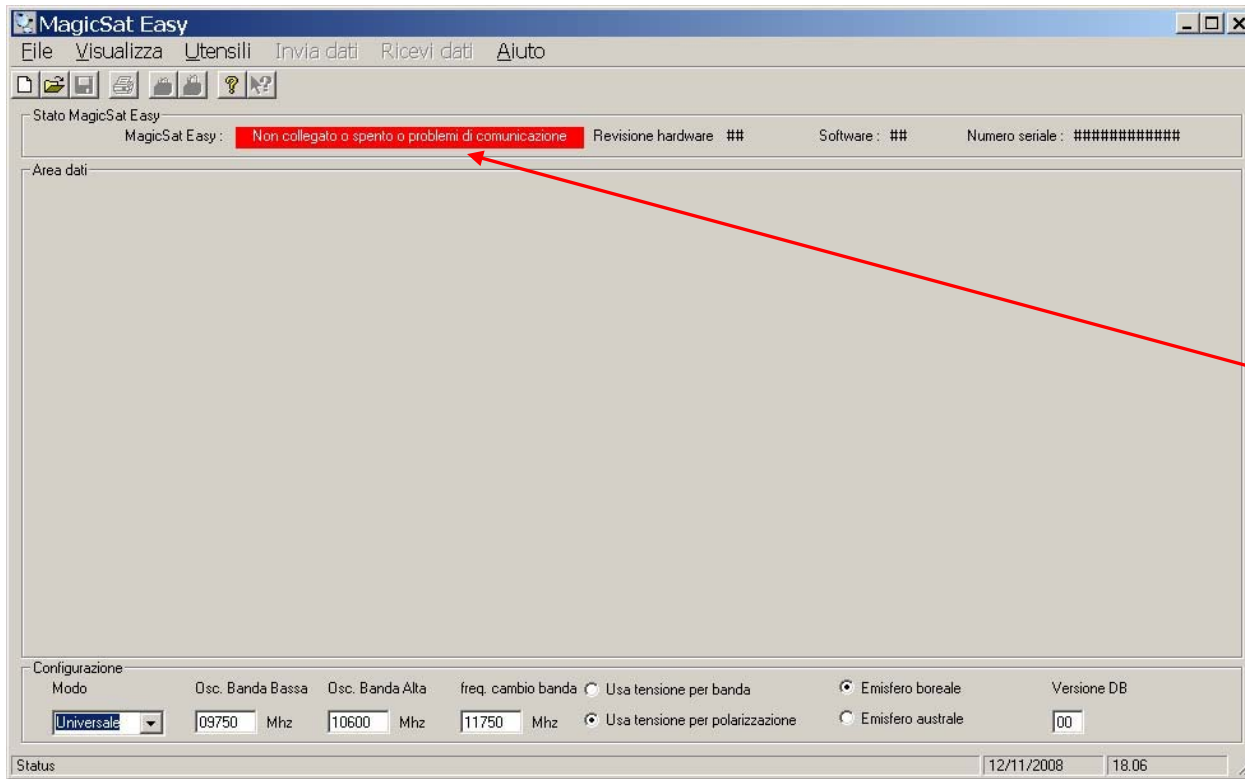
Set by means of the button “Utensili” (Tools) and then “Opzioni” (Options) the COM port used by your operating system.

Select “Apri” (Open) and indicate the file path “d10 Etichetta Europa Astra3 replaced by Thor”

Press the button – Invia dati – (Data Transfer)

In case of communication problems between the personal computer and the Easy system, kindly check the following pages.

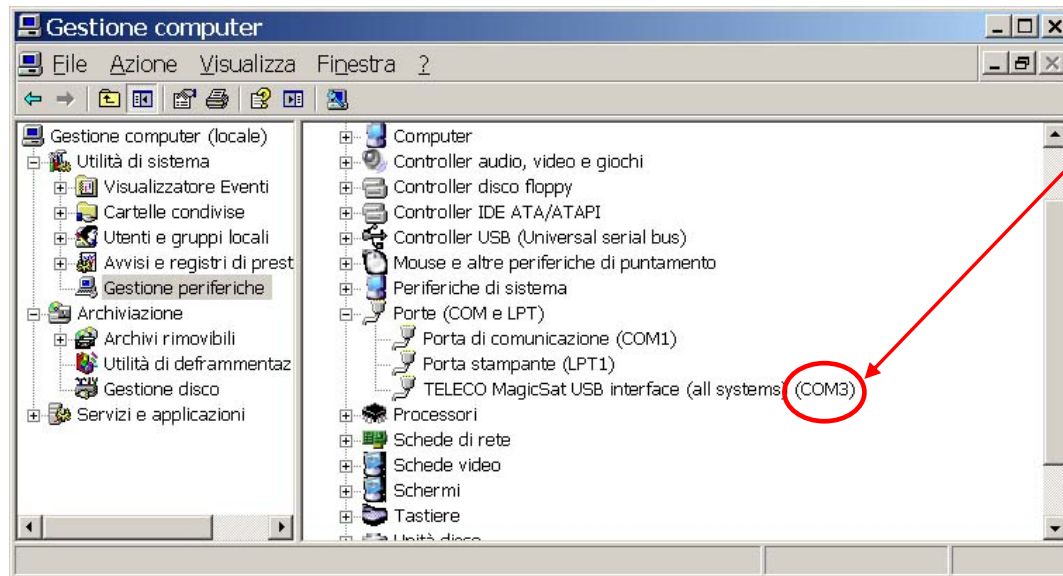
Also check on your PC which COM port is used.

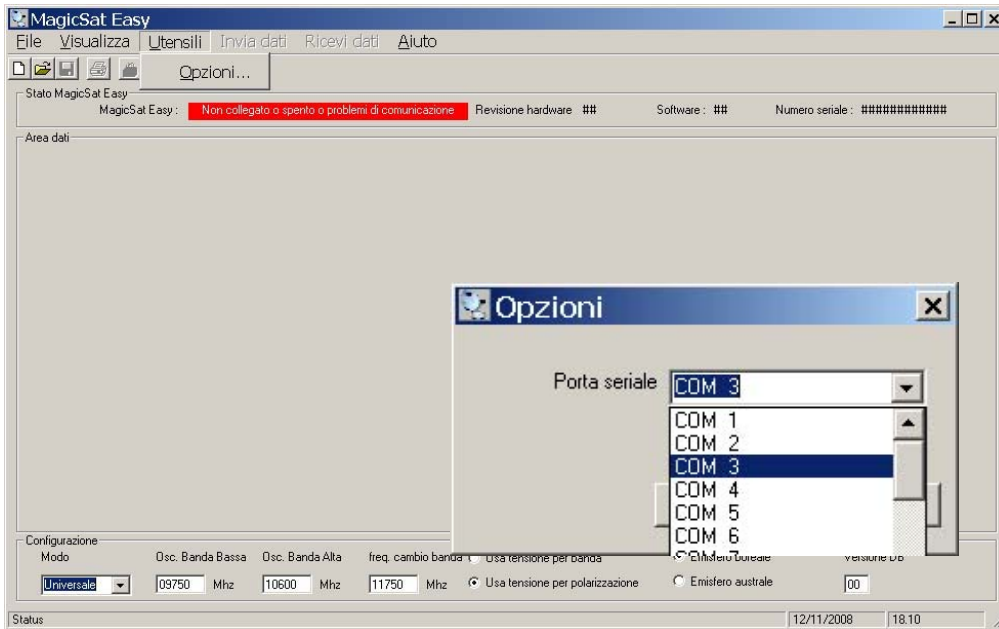


- 1) Start up the program MagicSat Easy
 - 2) Power supply 12V in the Easy (is not necessary to connect the motor cable)
 - 3) Push ON in the Easy front panel
- If you have this image on the pc with the red strip is probably you have not configured the com-port in the program.

Check the com-port as follows:
Risorse del computer,
Gestione,
Gestione periferiche,
Porte (Com e Lpt) } Your PC will show these lines in to english

Read com-port USB interface Teleco





Select:
Utensili,
Opzioni,

And select the com-port assigned by your
windows operating system

On the front panel, turn Off and after that, turn the
Easy On.

In this way you will obtain automatically the right
connection between PC and Easy

Open file and push "Invia dati"

